

CONSTRUCTION

Including: Architecture, Bricklaying, Carpentry, Civil Engineering, Site Managing, Floor Laying, Glazing, Heating and Ventilating, Interior Design, Painting and Decorating, Plastering, Plumbing, Roofing, Scaffolding, Planning, Wall & Floor Tiling and Welding...

Birmingham & Solihull



Vocational Learning Guide

2004-2005



THE LANDSCAPE

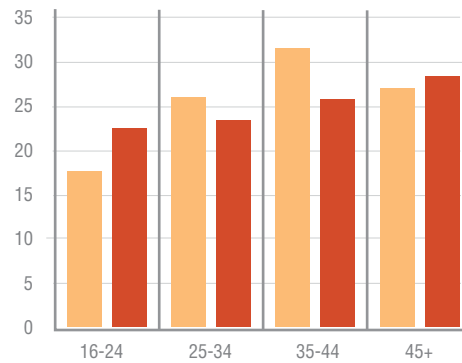
The UK construction industry employs 1.4 million people. No other industry has such a direct effect on the environment in which we live today and in the years to come. In Birmingham and Solihull, around 30,000 people are currently employed in construction ranging from self-employed traders to senior managers working for major developers on multi-million pound projects like Bullring.

One of the key challenges facing employers is the shortage of workers with the technical skills they need. More than a fifth of construction companies say they are aware of skills gaps within their current workforce but are unable to find suitable new recruits.

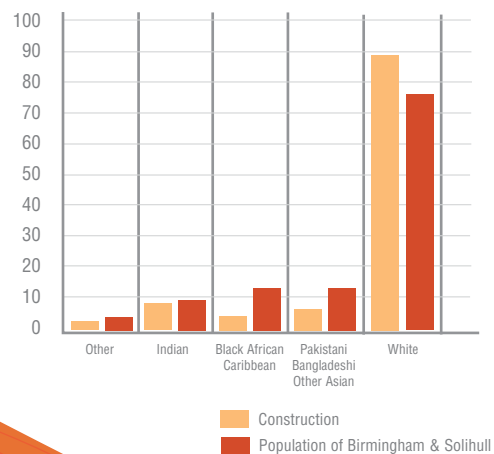
Employers face a challenging future because the local workforce profile is changing dramatically, with the proportion of workers from minority ethnic backgrounds predicted to rise from a quarter to a third by 2015. More skilled workers from African Caribbean, Pakistani, Bangladeshi and other minority ethnic backgrounds will be needed and recruitment policies need to change to find the right recruits.

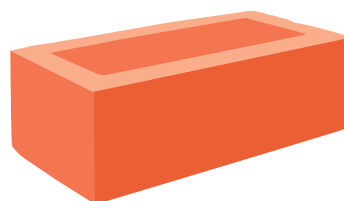
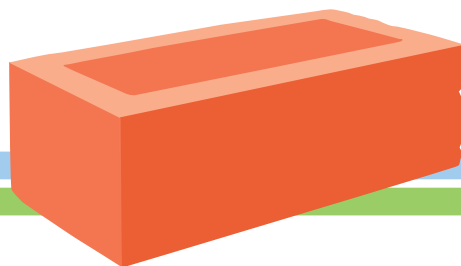
And the construction sector has an ageing workforce – many skilled practitioners are nearing retirement and will need replacing by young recruits. Could you fit the bill?

WORKFORCE PROFILE BY AGE IN THE CONSTRUCTION SECTOR (BIRMINGHAM & SOLIHULL)



WORKFORCE PROFILE BY ETHNICITY IN THE CONSTRUCTION SECTOR (BIRMINGHAM & SOLIHULL)





GURPREET AND JEETINDER SINGH

PLUMBERS | APEX PLUMBING AND HEATING



When cousins Gurpreet and Jeetinder Singh were choosing their careers, they decided to take the plunge together - and become Apprentice plumbers. Both enrolled on college courses after leaving school at 16 but they soon decided they wanted more hands-on, work-based experience.

Now, as integral members of the team at Birmingham-based Apex Plumbing and Heating, successful careers are in the pipeline for both Gurpreet and Jeetinder. Gurpreet said: "I went to college to take a diploma in plumbing which was a good start but I wanted to learn through working as well.

"So they found me an Apprenticeship and I came to work for Apex. I really love it, using my skills every day. It's a good job and I really feel that I'm learning all the time. I'm very happy where I'm working - but it would be great to run my own business one day. That's my ambition."

Jeetinder added: "I started doing a science course at college when I left school at 16 but I decided I wanted to earn money. The best thing about an Apprenticeship is the way it combines learning in college with learning on the job - in a trade like plumbing, that is the best way."

Paul Stuart, owner of Apex, said: "We've had a few Apprentices over the years and I could not have found better people to employ. They've all been really keen - first class attitude. I don't think they've given me a moment's hassle.

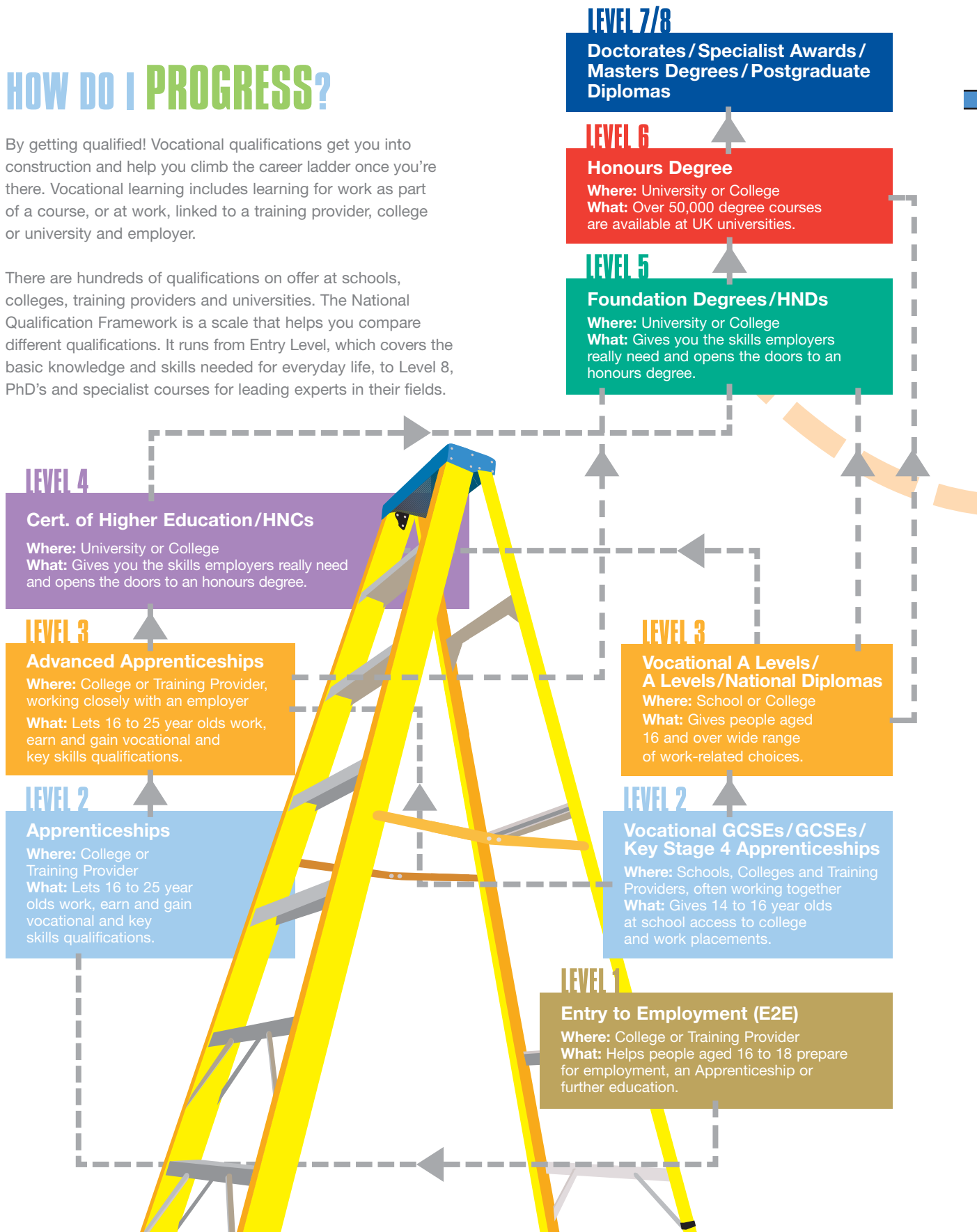
"Taking on Apprentices has worked very well for our business and I would have no hesitation in recommending them to other employers."



HOW DO I PROGRESS?

By getting qualified! Vocational qualifications get you into construction and help you climb the career ladder once you're there. Vocational learning includes learning for work as part of a course, or at work, linked to a training provider, college or university and employer.

There are hundreds of qualifications on offer at schools, colleges, training providers and universities. The National Qualification Framework is a scale that helps you compare different qualifications. It runs from Entry Level, which covers the basic knowledge and skills needed for everyday life, to Level 8, PhD's and specialist courses for leading experts in their fields.



WHICH ROUTE IS RIGHT FOR ME?

Work in the construction industry offers a diverse range of career opportunities and levels of entry. Naturally, entry qualifications and training routes will vary widely according to which career direction you choose. The range of careers open to you will need to be researched thoroughly, including the entry requirements, local training opportunities, funding support and so on.

Whatever you decide, use this A-Z as a starting point. To find out more refer to Next Steps at the back of this brochure. It could pave the way to help you build towards a great new career!

- Architect
- Architectural Technician
- Town Planner
- Civil Engineer
- Construction Manager
- Interior Designer
- Bricklayer
- Carpenter
- Floor Layer
- Glazier
- Painter & Decorator
- Plasterer
- Plumber
- Rofer
- Scaffolder
- Wall & Floor Tiler
- Heating & Ventilating Fitter
- Welder

DAVID BARRATT

ELECTRICIAN | TGS ELECTRICAL CONTRACTORS



When, at the age of 19, David Barratt landed a job as an electrician's mate he found it suited his technical mind down to the ground. He started an Apprenticeship and has been working for electrical contractors TGS ever since. David recently worked on the wiring for the

new retail units at Birmingham's Bullring Development, and is due to complete his NVQ Level 4. "The Apprenticeship has given me a brilliant start in the trade by giving me the time to learn the theory and apply it in the workplace. You never stop learning – and I reckon I've still got plenty to learn."



this: way

WHO WILL HELP ME GET THERE?

Living in Birmingham and Solihull gives you a wide range of learning providers to choose from, whatever your age. Vocational qualifications are available at secondary schools, 6th Form Colleges, Further Education Colleges, work-based learning providers and major universities in the area, not to mention hundreds of community learning centres for adults. Many learning providers work together to give their learners the best resources and teaching, and to support them as they move up the qualification ladder.

MAKING THE NEXT STEP

The following learning providers offer Construction-related vocational courses.

Schools ■ ○

Many schools are introducing Vocational GCSEs, Key Stage 4 Apprenticeships and other work-related courses. Schools with 6th Forms offer Vocational A Levels and National Diplomas. Contact your local school to find out more or visit the Birmingham Grid for Learning website www.bgfl.org

Higher Education Institutions

The following universities and colleges offer HNDs, HNCs and Foundation Degrees in Construction.

City College Birmingham ★

Tel: 0121 741 1000
www.citycol.ac.uk

South Birmingham College ★ ◆ ●

Tel: 0121 694 5098/5013/6334
www.sbc.ac.uk

University of Central England ★

Tel: 0121 331 5000
www.uce.ac.uk

KEY

- E2E ■ Vocational GCSEs/Key Stage 4 Apprenticeships ◆ Apprenticeships/Advanced Apprenticeships
- Vocational A Levels/A Levels/National Diplomas ★ Foundation Degrees/HNDs/HNCs



Learning Providers

The following learning providers will offer Entry to Employment and Apprenticeships/Advanced Apprenticeships. Contact the providers listed below to find out more.

2C Limited ●

Tel: 0121 200 1112

3E's Enterprises ●

Tel: 0121 788 1001

Archway

Tel: 0121 328 5005/384 4040

Bellis Training & Assessment Centre ●

Tel: 0121 236 6841

BET ◆ ●

Tel: 0121 503 4760

BIETEC ●

Tel: 0121 248 8322

Birmingham Rathbone Society ●

Tel: 0121 449 1011

Bournville College ●

Tel: 0121 483 1080

Carillion Construction Training ◆ ●

Tel: 0121 328 0070

CITB Construction Skills ◆ ●

Tel: 01509 610266

ENTA ●

Tel: 0121 359 6776

Gordon Franks Training & Personnel ●

Tel: 0121 632 5624

Greenspring Training ●

Tel: 0121 551 2202

JAC Training and Development ●

David James Centre for Learning

Tel: 0121 245 2828/2830

JHP Training ●

Tel: 0121 665 6655

JTL ◆

Tel: 0800 0852308

Kingsbury Training ●

Tel: 0121 384 3886

NACRO ●

Tel: 0121 554 6342

Solihull College ●

Tel: 0121 678 7271



In the fast moving world of vocational learning very detailed information in leaflets like this can go out of date quite quickly. Use the telephone numbers and website addresses above to get the very latest information.

THE NEXT STEPS

Information, Advice and Guidance

Many organisations promote careers in Construction. Here are just some of the websites you can explore, providing useful background on the industry and how to make progress in it.

General

The CITB Construction Skills, the Sector Skills Agency for the industry, runs a careers website packed with useful information for anyone interested in construction and the built environment.

www.bconstructive.co.uk

Architecture

www.careersinarchitecture.net

Building Services

SummitSkills

www.summitskills.org.uk

Birmingham and Solihull Connexions

Connexions is a youth support service providing information, advice and guidance for all 13-19 year olds (or up to 25 if you have a learning difficulty or disability). Connexions Personal Advisers work with learners in schools, colleges and training providers and are also available at 17 Connexions Centres across Birmingham and Solihull.

Tel: 0121 248 8004/8005

www.connexions-bs.co.uk

Connexions Direct

Connexions Direct Advisers offer information, confidential advice and practical help, and are available from 8am to 2am, 7 days a week. The Connexions Direct website includes an A-Z of over 600 occupations, giving information on job satisfaction, pay, conditions, entry requirements and career progression.

Tel: 080 800 13 2 19

www.connexions-direct.com/jobs4u



Learning+Skills Council

Birmingham and Solihull

Birmingham and Solihull Information, Advice and Guidance (IAG) Network

Over 200 organisations involved in education, training and skills development in Birmingham and Solihull belong to the IAG Network and all provide adults with information, advice and guidance on learning and work.

Tel: 0800 073 0634

www.iag-bs.co.uk

WorkTrain

This national jobs and learning site has a training section which allows you to search for courses by subject area, qualification, teaching style, and location.

www.worktrain.gov.uk

Apprenticeships

Loads of information on Apprenticeships ...what they involve, where they can take you and how to find out more.

Tel: 08000 150 600

www.apprenticeships.org.uk

Learndirect

Information on learning opportunities, funding, childcare, careers, qualifications, including online factsheets and information on local career and educational advice centres.

Tel: 0800 100 900

www.learndirect.co.uk

Higher Education

Aimhigher

The Government's official site for students, parents and advisers, with links to various resources.

www.aimhigher.ac.uk

Aimhigher West Midlands

The local higher education scene, with information on opportunities for vocational learners.

www.aimhigherwm.org

UCAS (Universities and Colleges Admissions Service)

The official site for undergraduate applications and admissions, complete

with a searchable course database and applications information. Also, help for international students and parents.

www.ucas.ac.uk

Foundation Degrees

The latest information on developments in foundation degrees.

www.foundationdegree.org.uk

Hotcourses

A comprehensive database for undergraduate, postgraduate, FE and vocational courses.

www.hotcourses.co.uk

Finance and Support for Learning

DfES - Student Support

Contains forms, guides and frequently asked questions in sections for students, parents and advisers.

www.dfes.gov.uk/student-support

Birmingham City Council Education Department Student Support Service

Tel: 0121 303 3647 and 3648

e-mail: studentsupport@birmingham.gov.uk

Solihull Metropolitan Borough Council Student Support Service

Tel: 0121 704 6639

e-mail: studentsupport@solihull.gov.uk

SKILL (The National Bureau for Students with Disabilities)

Factsheets and answers to frequently asked questions for students with disabilities.

www.skill.org.uk

Student Money

A guide to planning and organising your student finances.

www.studentmoney.org

